



WHAT TO STOCK IN THE
Stafford
COMMUNITY FRIDGE?

WE CAN ACCEPT



SALADS
FRUITS
VEGETABLES



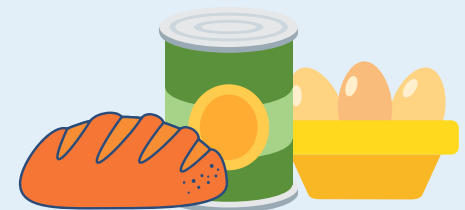
FRUIT JUICES
GATORADE
SMOOTHIE PACKS



BABY PURÉE



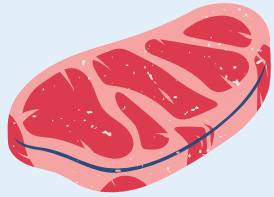
CHEESE
BUTTER
YOGURT
MILK



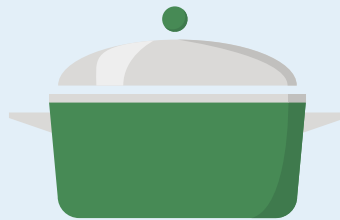
BREAD
CANNED FOODS
DIPS/SALSA
EGGS

Please note that while we appreciate all donations from the community, we ask that the fridge donations are as healthy as possible. Please refrain from donating raw meat, soda, and snacks high in sugar.

WE CANNOT ACCEPT



RAW MEAT



HOMEMADE FOOD



ALCOHOL



USED/OPENED ITEMS

Please note that while we appreciate all donations from the community, we ask that the fridge donations are as healthy as possible. Please refrain from donating raw meat, soda, and snacks high in sugar.



**THANK YOU FOR YOUR
CONTRIBUTION!**

